

# Supporting the Cree Traditional Way of Life

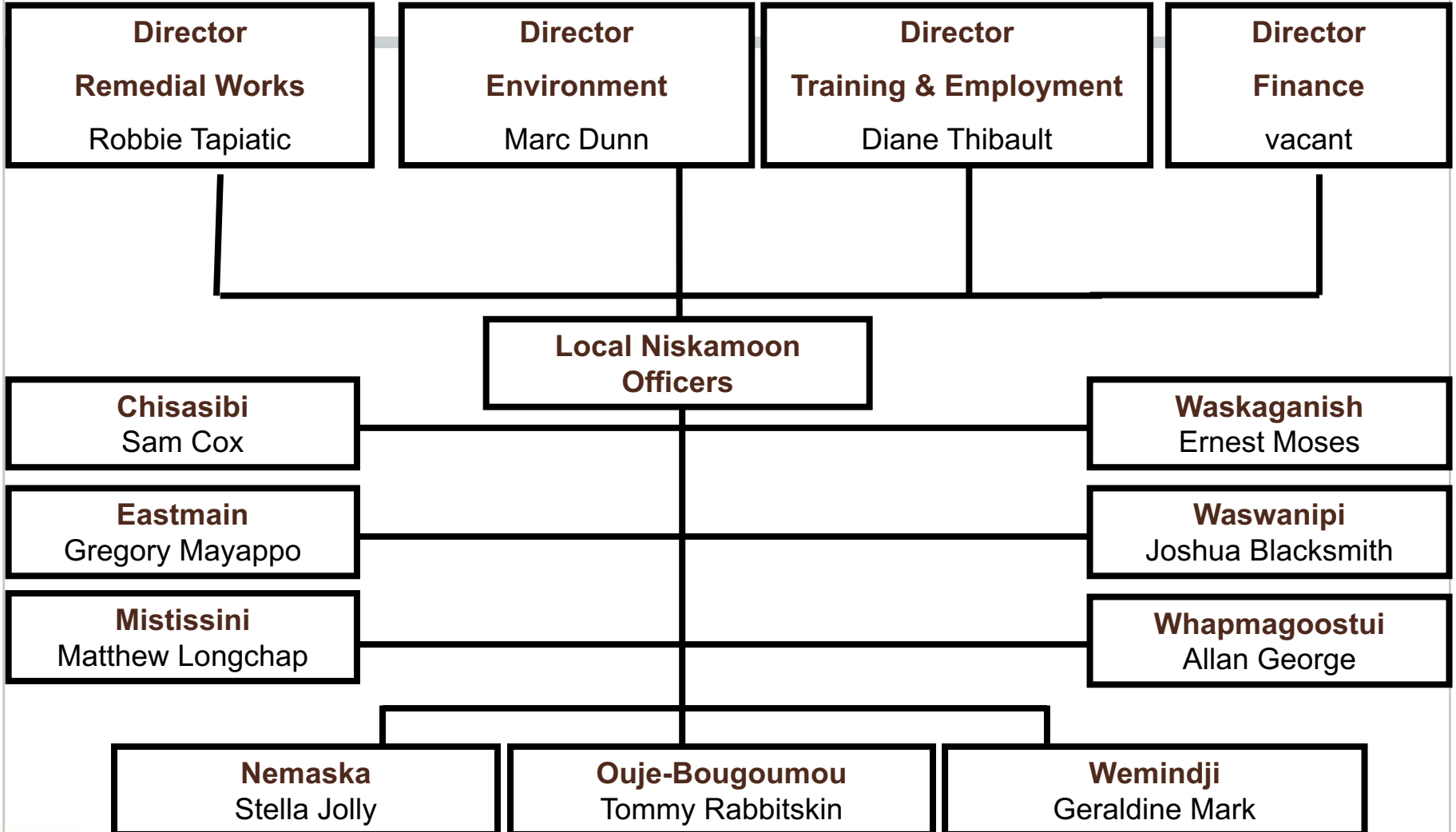


Presented by  
**Robbie Tapiatic & Marc Dunn**  
*Niskamoon Corporation Directors*

GCC/CNG Annual General Assembly  
August 7-8-9, 2018 Mistissini, Qc

## Board of Directors

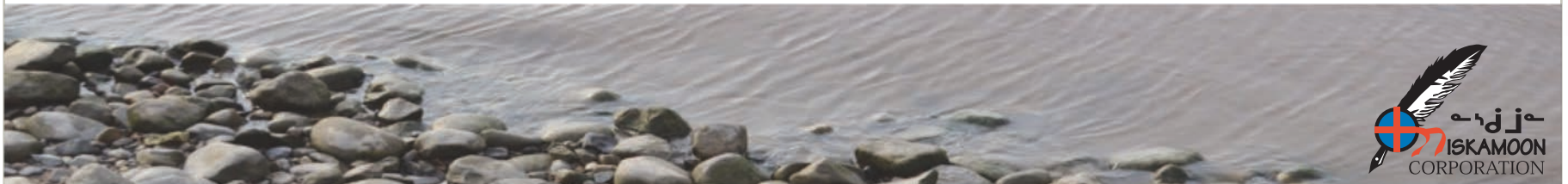
**Chairperson William Macleod, Vice-Chairperson Mathieu Boucher, Matthew Wapachee, George M. Bobbish, Emily Whiskeychan, (vacant), Real Courcelles, and Daniel Lauzon**



# Mission Statement

Niskamoon provides an efficient framework for cooperation between the Crees and Hydro-Québec in respect to the implementation of the Cree-Hydro-Québec Agreements, by continuously facilitating and simplifying access to funds and programs for Crees, Cree communities and Cree entities.

Niskamoon seeks to develop projects in close collaboration with Cree land users and other beneficiaries that alleviate the impacts of hydroelectric development in Eeyou Istchee.



# Funding Core Values

Niskamoon funds projects that adhere to our main core values, which:

1. Ensure the autonomy and self-sufficiency of Cree land users over time.
2. Promote and enhance the passing of traditional Cree knowledge to future generations.
3. Maximize the benefits for as many Crees as possible.
4. Enhance and promote the continued use of lands impacted by hydroelectric development.

# Programs

Niskamoon supports the traditional way of life as follows:

1. Remedial Works - Direct support for impacted land users through Trapline Projects.
2. Cultural Programs - Support for the Cree Way of Life through the Social Innovation Fund.
3. Fisheries and Health – Support for the continuity of Traditional Cree Fisheries.



# Remedial Works Program

- **Goal:** To alleviate the negative impacts of hydro-electric development through the funding of projects identified, developed and implemented by Cree land users themselves.
- Funds are used mainly to improve and enhance Cree harvesting on the land.

# Remedial Works Program

## Examples of projects:

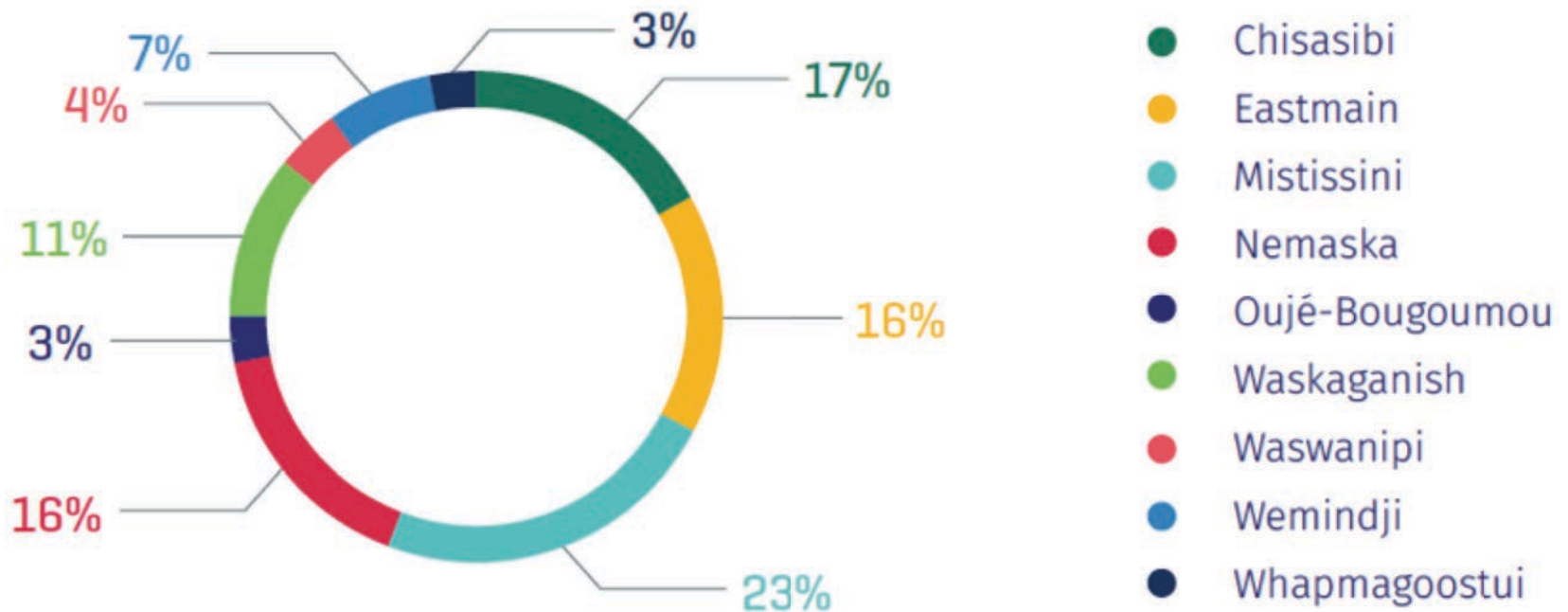
1. Goose ponds and corridors
2. Wildlife feeding areas (coastal enhancement project; rejuvenation cutting of poplar stands)
3. Boat landing areas
4. Traditional shelters
5. Wood cutting
6. Spring and fall airlifts
7. Trans-Eeyou Trail





# Remedial Works Program

## REMEDIAL PROGRAM — BY COMMUNITY 2002-2018



(Pie # 1)

# Social Innovation Fund

- Innovative projects that ensure the next generation of Cree land users.
- Priority to programs given in the *bush* with an emphasis on the *traditional Cree Way of Life*.
- Emphasis on *transfer of knowledge* and participation of *elders*.
- Promoting *partnerships* with regional and local Cree entities.

# Social Innovation Fund

Ultimately, SIF = connecting to the land

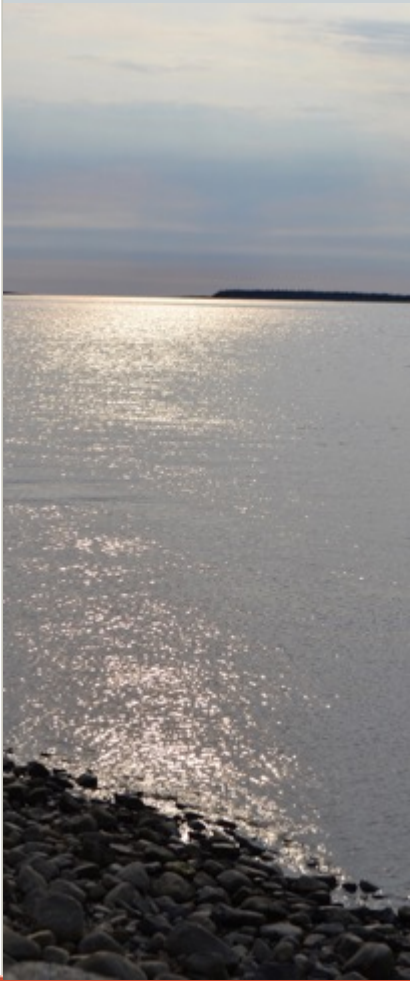
.... Land as *Healer*

.... Land as *home of Culture*

.... Land as *holder of Knowledge*

.... Land as *unifying Force*

.... Land as *key to the Future*

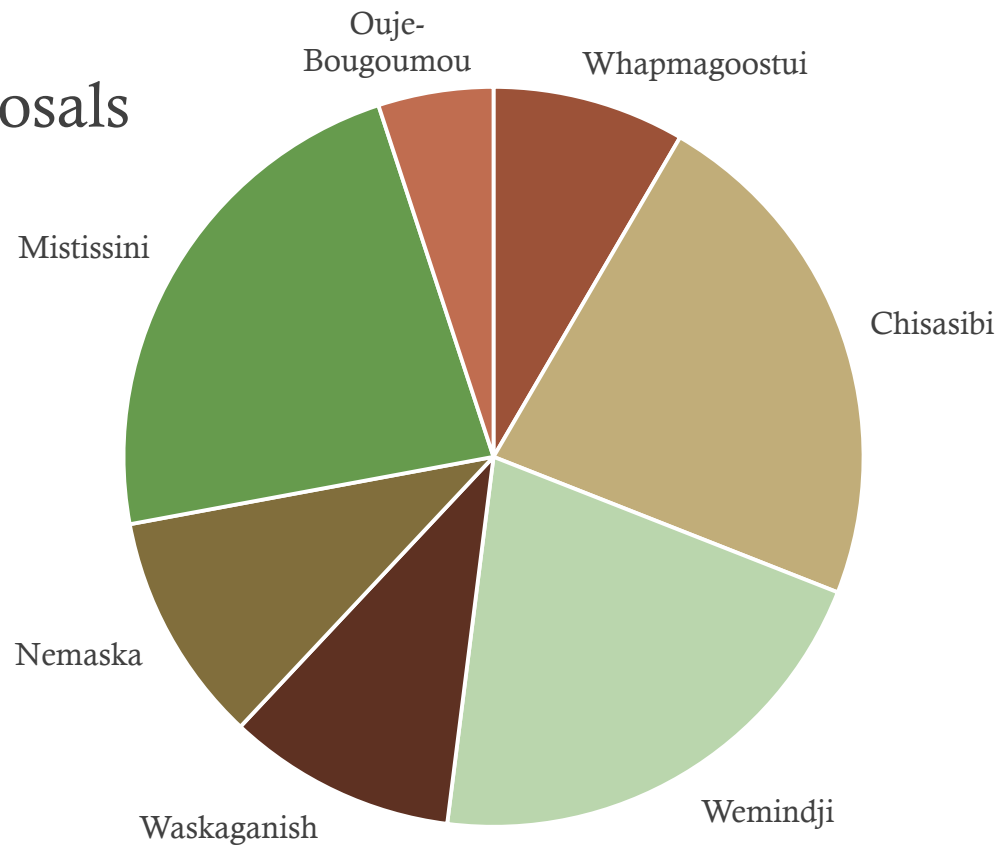


# Social Innovation Fund

February 2018

1<sup>st</sup> Call for Proposals

**\$237,748**



(Pie # 2)



# Fisheries Enhancement Program

- Projects that promote the continuity of Traditional Cree Fisheries
- Emphasis on transfer of Traditional Knowledge
- Long-term infrastructure and seasonal harvesting techniques



# Research Programs

## *Why Research??*

- To better understand the impacts of hydroelectric development on resources important for Crees.
- To combine Western Science with Cree Knowledge (traditional and “modern”).
- To better target Niskamoon projects for all Cree beneficiaries.

# Coastal Habitat Comprehensive Research Program

A collaborative approach...



Environment and  
Climate Change Canada

Environnement et  
Changement climatique Canada



UNIVERSITY  
OF MANITOBA

UQÀM  
Université du Québec à Montréal

UQAR SMER



University of  
New Hampshire



# Coastal Habitat Comprehensive Research Program

- Eelgrass (*Zostera marina*) ecosystem an important coastal habitat used by many invertebrates, fish, waterfowl species
- Major decline of Eelgrass beds in the 90's along the James Bay eastern coast
- For many years, the Cree people raised issues of environmental changes in the James Bay coastal marine environment, particularly the decline of eelgrass and the impacts on the traditional activities of the Cree surrounding waterfowl.
- Joint interest to address knowledge gaps in understanding the effects of environmental changes in coastal marine ecosystem led to an agreement signed between the Cree, Hydro-Québec and Niskamoon on Aug. 4, 2016.





# Coastal Habitat Comprehensive Research Program



- What are the main factors affecting the current growth of eelgrass along the eastern coast of James Bay?
- What is the impact of the current state of eelgrass beds on waterfowl presence along the coast of James Bay and, subsequently, Cree hunting activities?

# Research Components

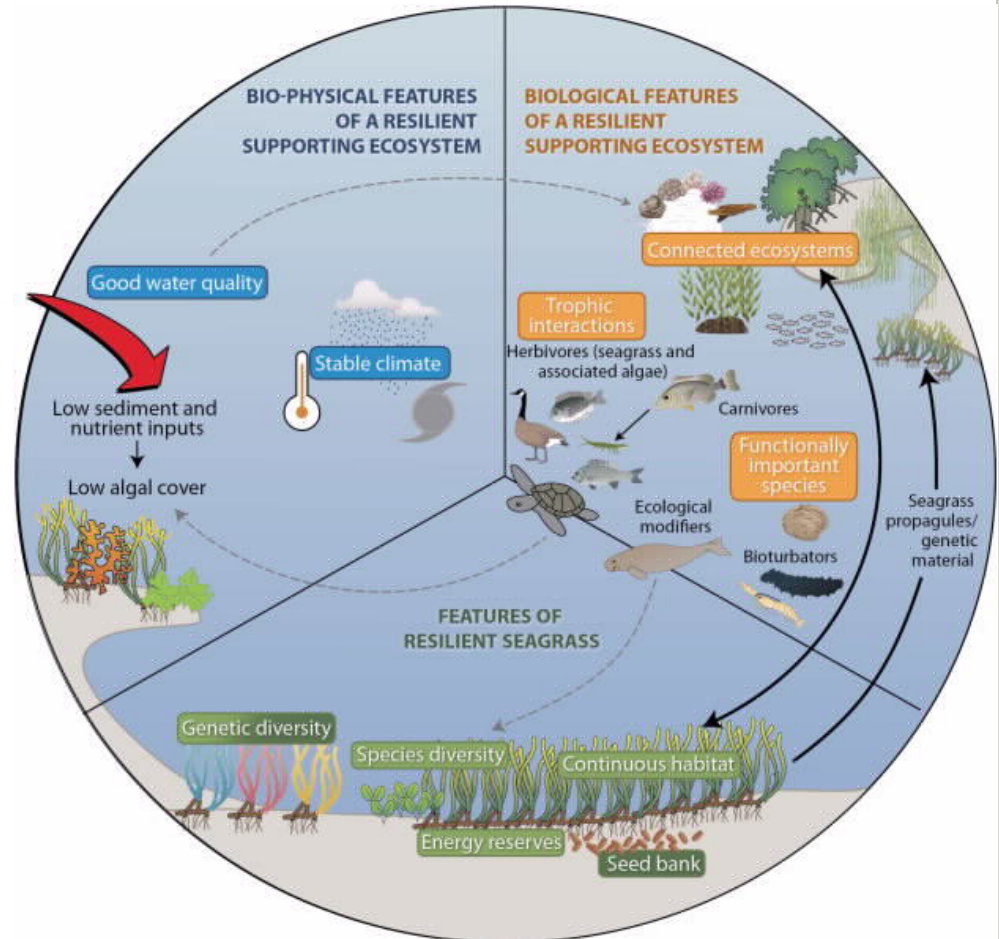
Identification of factors influencing the growth of Eelgrass along the east coast of James Bay

- Research Question 1
- 1) Coastal oceanography (UQAR/UMan)
  - 2) River Inputs (UQAM)
  - 3) Eelgrass beds (UNH)
- Research Question 2
- 4) Waterfowl (UQAM/CWS/CTA)
  - 5) Cree land use and harvesting activities

# Integration of Research Results

Integration of different research studies & Cree Traditional Ecological Knowledge to answer main research questions.

- Collaborative efforts by researchers
- Coordination by steering committee
- Common sampling locations
- Validation by participating communities



# Collaboration & Partnership

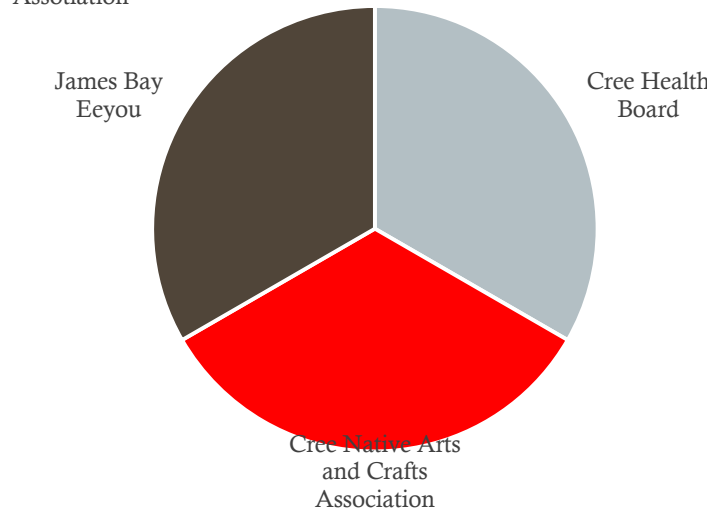
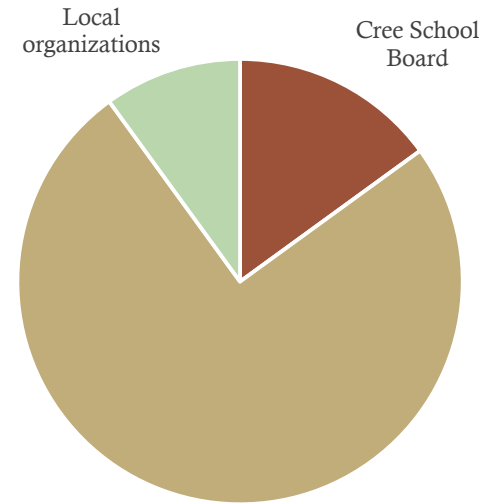
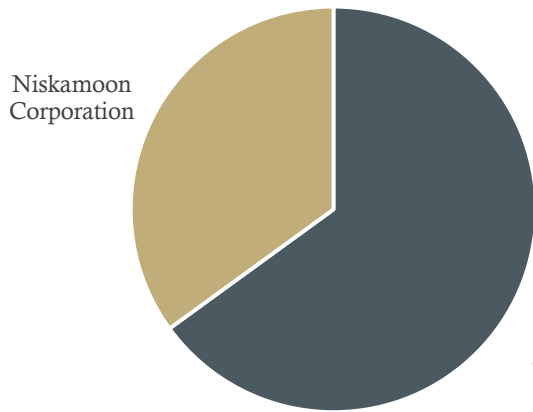
Niskamoon Corporation believes that partnerships with Cree and non-Cree entities are essential to building sustainable programs for land users.



- Local government entities (bands)
- Cree Trappers' Association
- Cree School Board
- St-Félicien CEGEP
- Hydro-Québec

# Collaboration & Partnership

**NO!**

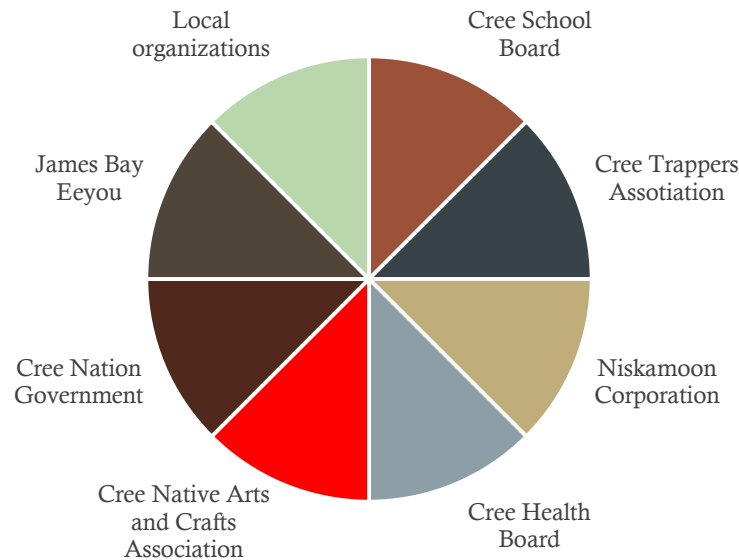


(Pie # 3-5)



# Collaboration & Partnership

(Pie # 6)



**Everybody working together!!**





# Meegwetch Ginskoumdinnaan

